

The *Muskokan*

POST & BEAM



Square Footage

MAIN FLOOR	1904
UPPER FLOOR	1639
UNFINISHED/ BONUS AREA	0
TOTAL LIVING AREA	3543
GARAGE	1157
COVERED ENTRY/PORCH	288
BALCONY/ DECK	0
TOTAL AREA	4988

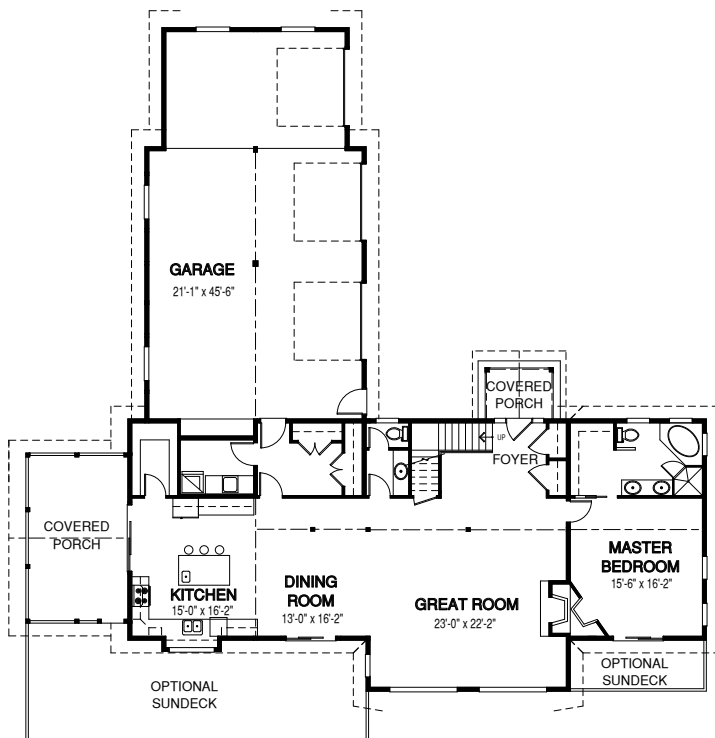
Dimensions

WIDTH	DEPTH
80	78

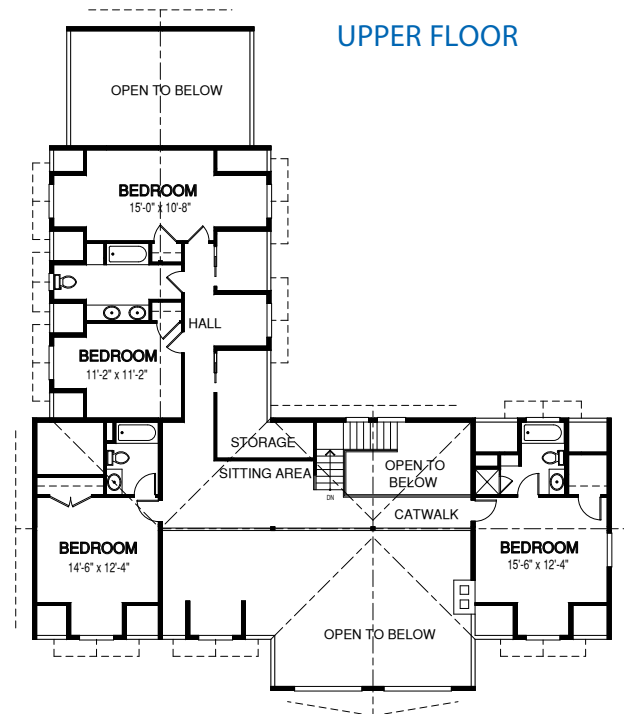
The Muskokan is perfect for a wide lot frontage. This post and beam home design was created for waterfront living.

MAIN FLOOR

Designs, Images & Plans © Linwood Homes Ltd.



UPPER FLOOR



Contact us today for a price quote or details: linwoodhomes.com/ask • 1-888-546-9663

POST & BEAM: The Post & Beam Home Package includes full custom concept design, construction plans, technical support, and all the materials required to build the structure of your home to the lock-up stage.